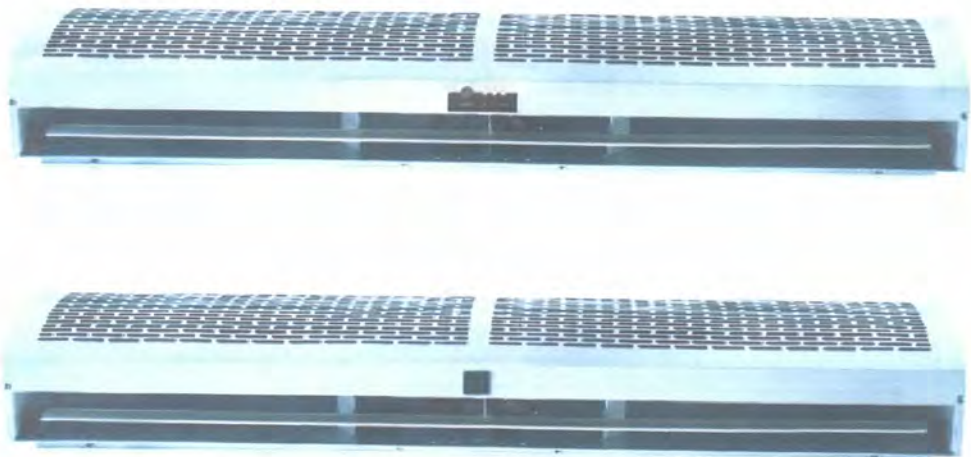

Air Curtain

Cross-flow type
Instruction Manual



**Before using this unit,
please read this instruction manual completely.**

PRODUCT OUTLINE:

AIR CURTAINS are designed for installation in shops, office buildings, hotels and restaurants doorway. They discharge a curtain of air, which effectively shut out outside air. Use them to keep out insects, unpleasant smells, and dust from indoor where a large number of people pass in and out. These air curtains also prevent air escaping from an air-conditioned room.

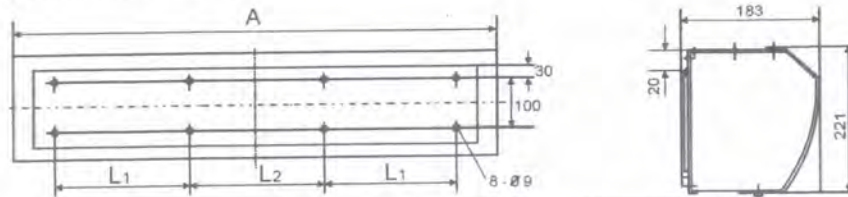
CONDITIONS OF USE:

Please DO NOT install the unit under following conditions:

1. Do not operate ambient temperature over 50°C or below -10°C.
2. A relative humidity over 95% at room temperature and steamy area.
3. Contains of oily smoke.
4. Materials or gases may cause explosion.
5. Nearly corrosive gases.
6. Locate in where may be sprinkle with water.
7. In order to avoid the air deflector be out of shape, pls dont hold it when taking out the air curtain from carton!

DIAGRAM:

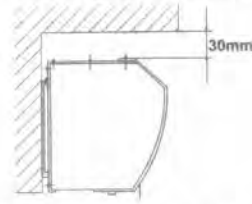
[Dimension : mm]



BODY LENGTH	A	L1	L2
900	900	260	220
1200	1200	260	220
1500	1500	260	220
1800	1800	260	220

INSTALLATION:

6. During installation, the mounting plate should not have a gap between the walls.
7. The distance between the unit and the ceiling must reserve at least 30mm.
8. The unit is installed horizontally.
9. Recommend installing the machine at the height of at least 2.3M above the ground.
10. A triple pole switch should precede the appliance with at least 3mm breaking gap.



MAINTENANCE AND REPAIR:

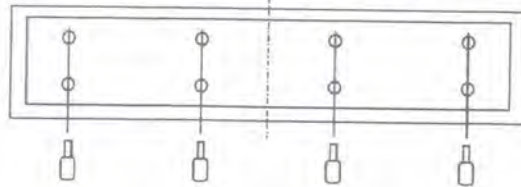
1. Unplug the unit from any power source prior checking or maintenance.
2. Keep electric motor or other parts away from moisture to avoid short circuit.
3. Regular checking and maintenance is recommended, clean all the dust off. Simply damp with mild detergent by a cloth for cleaning.
4. Detach the unit only by professionals.

SPECIFICATIONS: (220~240V 50/60HZ)

BODY LENGTH	Power (W)		Air Velocity (m/s)		Air Vol. (m ³ /h)	Noise (dB)	Weight (kg)
	HI	LO	HI	LO			
900 mm	150	120	13	10	2250	57	12.7
1000 mm	185	135			3000	57	13.7
1200 mm	220	170			3000	59	15.3
1500 mm	265	210			3800	62	18.6
1800mm	300	240			4500	62	24.2

NOTE: Rated voltage and frequency are stated as per rating label.

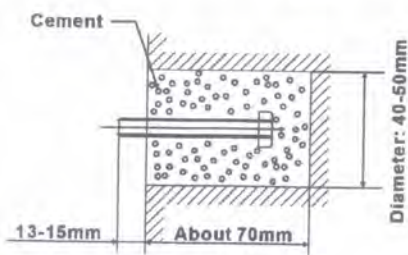
1. Unscrew the mounting plate and take it off. (Fig. 1, Fig.2)
2. Drill a hole as the instruction. Then put into the bolt and fix it with cement. (Fig.3)
3. Hanging on the mounting plate and ensure fix it. (Fig.4)
4. Installing the machine onto the mounting plate and ensure the safety, than fix it tighten with screws. (Fig.5)



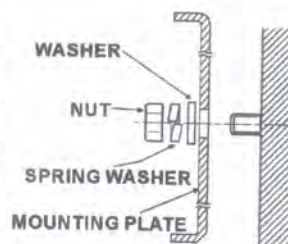
(Fig. 1)



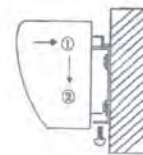
(Fig. 2)



(Fig. 3)



(Fig. 4)



(Fig. 5)

CAUTIONS / INSTALLATIONS:

During installing the unit, please pay special attention to the following points in order to obtain the ultimate efficiency.

1. Install on solid place to avoid vibrations when machine is running and also for safety reason unnecessary noise caused by vibration can be prevented.
2. AIR CURTAINS are used for indoor purpose.
3. Depending on the height to choose the most suitable model. If it fixed too high, the shut-off distance will be affected then the efficiency will be reduced.
4. The air is drawn in front of the unit and is blown out downwards.
5. Several units can be mounted next to each other when wide door opening occur. Under such condition, a narrow space in between 20-40mm may happened.