

Clean Air Services Pty. Ltd.

ACN: 055 514 817 ABN: 17 055 514 817

Website: www.cleanairservices.com.au

Email: info@cleanairservices.com.au

Unit 1 / 147 Greens Road Dandenong South Victoria 3175

Tel: 03.97948182 Fax: 03.97935707

Industrial Centrifugal Air Curtain – 3 phase.



1. The air is drawn in front of the unit and is blown out downwards.
2. Several units can be mounted next to each other.
Under such conditions, allow a narrow space in between 20-40mm.
3. During installation, the mounting plate should not have a gap between the walls.
4. The distance between the unit and the ceiling must be at least 30mm.
5. The unit is installed horizontally.
6. Recommend installing the machine at the height of at least 2.3M above the ground.
7. A triple pole switch should precede the appliance with at least 3mm breaking gap.

MAINTENANCE AND REPAIR:

1. Unplug the unit from any power source prior checking or maintenance.
2. Keep electric motor or other parts away from moisture to avoid short circuit.
3. Regular checking and maintenance is recommended, clean all the dust off simply with damp cloth and mild detergent.
4. Detach the unit only by professionals.
5. Wipe over units every 3 months to remove dirt & dust.
6. Blow out units every 12 months for dirt and dust

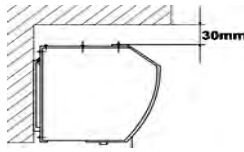
Before using this unit, please read the instruction manual completely.

CONDITIONS OF USE:

Please DO NOT install the unit under following conditions:

1. Do not operate ambient temperature over 50°C or below -10°C.
2. A relative humidity over 95% at room temperature and steamy area.

3. Contains of oily smoke.
4. Materials or gases may cause explosion.
5. Near corrosive gases.
6. Located in area where it may be sprinkled with water.



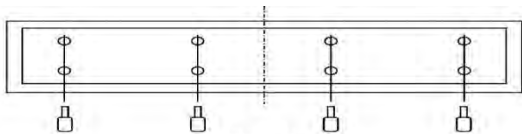
7. Leave at least 30mm from ceiling.

Functions:

Well suited for use in large entrances industrial doorways.

All-metal housing, advanced water and fire resistance, simple installation and easy cleaning

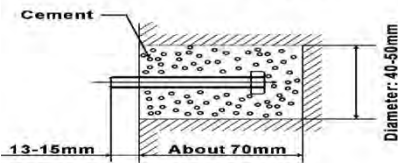
Adopted optimized electrical motor, reliable performance, motor operates 5000 hours continuously without any defects.



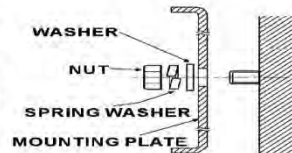
(Fig. 1)



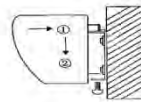
(Fig. 2)



(Fig. 3)



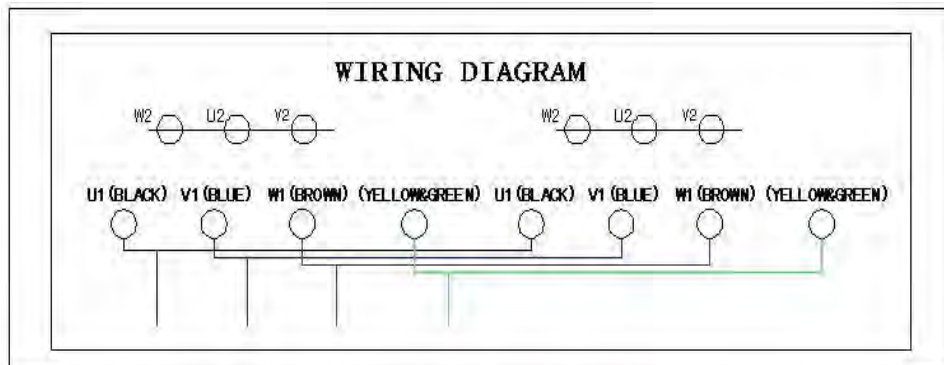
(Fig. 4)



(Fig. 5)

INSTALLATION:

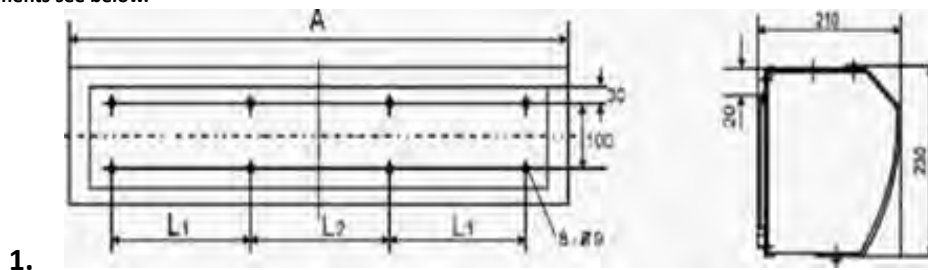
1. Unscrew the mounting plate and take it off. (Fig. 1, Fig.2)
2. Drill a hole as the instruction. Then put into the bolt and fix it with cement. (Fig.3)
3. Hanging on the mounting plate and ensure fix it. (Fig.4)
4. Installing the machine onto the mounting plate and ensure the safety, then fix it tighten with screws. (Fig.5)
5. Electrical installation of these units is 3 core and earth.



CAUTIONS / INSTALLATIONS:

During installing the unit, please pay special attention to the following points in order to obtain the ultimate efficiency.

1. First, connect the 3-phase electric circuit with air curtain unit 3-phase power line.
Test the air curtain, check its air wheel rotation direction, counterclockwise is correct
2. Install on solid place to avoid vibrations when machine is running and also for safety reasons, unnecessary noise caused by vibration can be prevented.
3. Depending on the height to choose the most suitable model.
If it is fixed too high, the shut-off distance will be affected, then the efficiency will be reduced.
4. Mounting measurements see below.



1.

2. [Dimension: mm]

	A	L1	L2
900	910	300	250
1200	1210	300	250
1500	1510	300	250
1800	1810	300	250
2000	2010	300	250

Depending on the height to choose the most suitable model.

Warranty:

12 months parts only

Model No.	Height	Air Speed	Air Flow (l/s)	Air Flow (m3/h)	Rated voltage	Amps	Db	Watts	Weight	Dimension L x W x H
LM8009	3-4.5m	28 m/s	970	3500	380V/3 phase	.86/2.6	72	600	38	900x325x425
LM8010	3-4.5m	28 m/s	970	3500	380V/3 phase	1.0/3.0	72	700	42	1000x325x425
LM8012	3.5-5 m	28 m/s	1300	5000	380V/3 phase	1.15/3.45	74	800	48	1200x325x425
LM8015	5-6m	28 m/s	1800	6800	380V/3 phase	1.6/4.75	76	1100	69	1500x325x425
LM8018	6-7 m	28 m/s	2200	8000	380V/3 phase	2.0/6.0	78	2200	73	1800x325x425
LM8020	6-7 m	28 m/s	2200	8000	380V/3 phase	2.45/7.3	80	2200	76	2000x325x425